



# MONTHLY MEMBERSHIP PROGRESS REPORT

District 323 H2

Results as of: 4/30/2017

GMT: KAMLESH JAIN

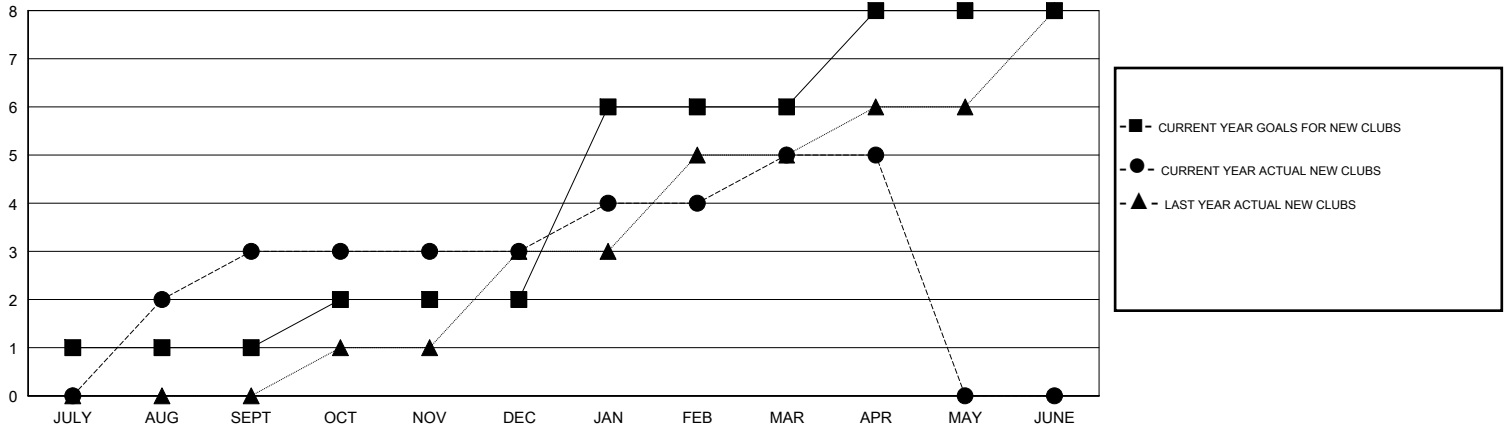
LOCATION INDIA

GMT CA

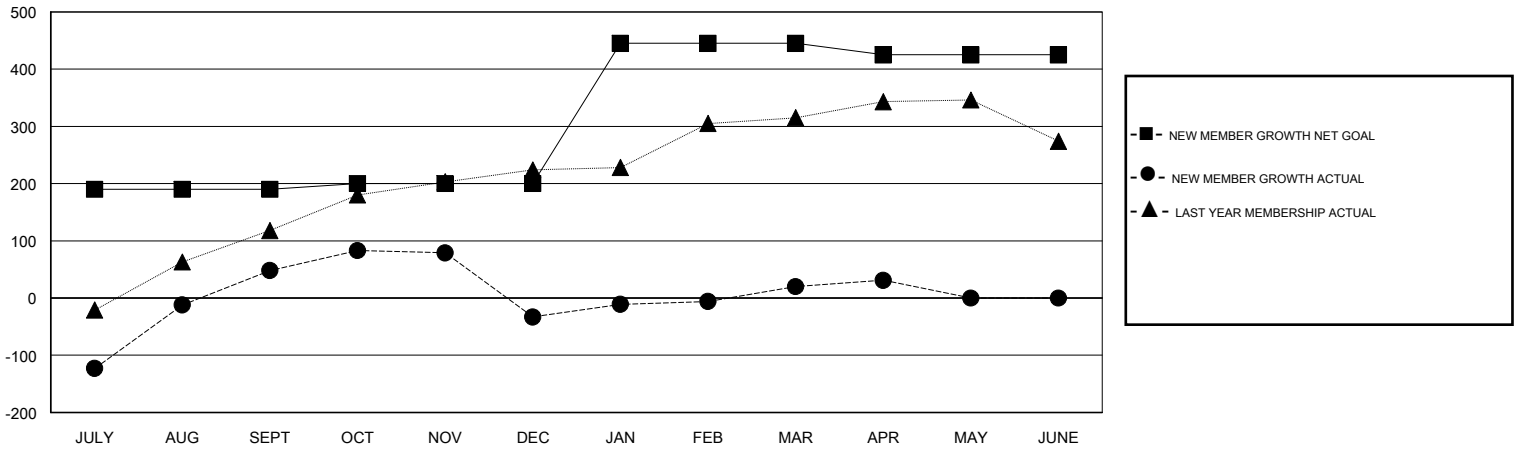
Clubs			
RESULTS FOR 2016-2017			
QUARTER	NEW CLUB GOAL	NEW CLUBS	DROPPED CLUBS
JULY/AUG/SEPT	1	3	0
OCT/NOV/DEC	1	0	6
JAN/FEB/MAR	4	2	0
APR/MAY/JUNE	2	0	0

Members			
RESULTS FOR 2016-2017			
QUARTER	NEW MEMBER GROWTH NET GOAL (not reinstated or transfers)	NEW MEMBER GROWTH ACTUAL (not reinstated or transfers)	DROPPED MEMBERS ACTUAL (including transfers)
JULY/AUG/SEPT	190	222	174
OCT/NOV/DEC	10	70	151
JAN/FEB/MAR	245	103	50
APR/MAY/JUNE	-20	12	1

GOALS AND ACTUAL NEW CLUBS CUMULATIVE



GOALS AND ACTUAL MEMBERS CUMULATIVE



DROPPED CLUBS: 6	54 CLUBS OF 78 ADDED 1 OR MORE NEW MEMBERS	<u>GENDER DISTRIBUTION</u>	
DROPPED MEMBERS		MALE	2,448 (80.10%)
DECEASED	5	FEMALE	608 (19.90%)
CLUB CANCELLED	110	TOTAL FAMILY UNIT MEMBERS	
OTHER	261	960	
TOTAL	376	FAMILY MEMBERS PAYING HALF DUES	
		493	

[CLICK HERE FOR CUMULATIVE MEMBERSHIP DATA](#)